



MD-TEC

Medical Devices Testing and Evaluation Centre

Enabling Life Science companies to
bring products to market quickly,
at less cost and with reduced risk

ABOUT US

Medical Devices Testing and Evaluation Centre (MD-TEC) is a state of the art facility based within the Institute of Translational Medicine in Birmingham, designed to support medical technology and life science businesses across the region.

Combining unrivalled facilities with clinical, academic and industry expertise, MD-TEC is designed to remove the regulatory blockages encountered by SMEs and to support the accelerated translation of medical devices in to the commercial environment.

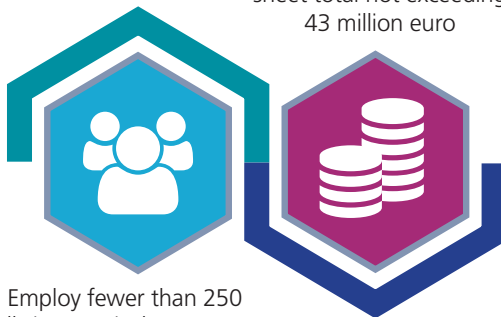
This project is part funded through the European Regional Development Fund Programme 2014–2020 and provides opportunities for eligible companies to receive support until December 2019.

ELIGIBILITY

Your business must meet the definition of a Small to Medium Enterprise and be located within the Greater Birmingham and Solihull Local Enterprise Partnership (GBSLEP).

Small to Medium sized Enterprises are businesses that:

Have an annual turnover not exceeding 50 million euro and/
or have an annual balance sheet total not exceeding 43 million euro

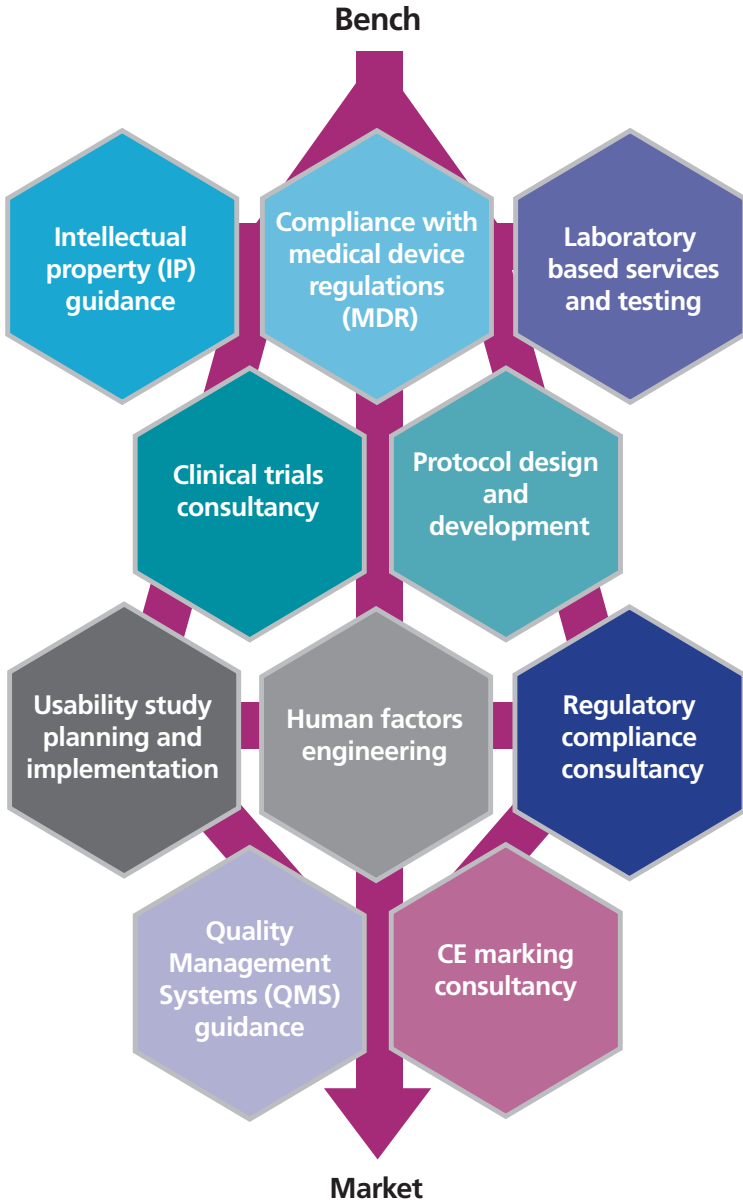


Employ fewer than 250 full-time equivalent persons

Additional eligibility criteria apply; our experts will guide you through the process according to the specific needs of your business.

SUPPORT

Working within our simulation and laboratory facilities, MD-TEC has a broad range of expertise covering:





With wider support from the Healthcare Technologies Institute (HTI) encompassing:

- Tissue regeneration, engineering and interfaces
- Advanced materials, biomaterials development and characterisation
- Nanotechnology
- Biophotonics
- Sensors
- Fluid dynamics



Please contact us:

Third Floor,
Institute of Translational Medicine,
Heritage Building (Queen Elizabeth Hospital)
Mindelsohn Way,
Edgbaston, Birmingham B15 2TH

Contacts:

✉ mdtec@uhb.nhs.uk
🌐 md-tec.com
☎ 0121 371 8540
☎ 0121 371 8538